

THE 41ST ANNUAL



PEPPERMILL RENO
RESORT ROOM GUIDE
AND 2024 PLAYER FEES



SEPTEMBER 22ND * 26TH

For more information contact Michael Meiches
michael@adworldseries.com 310.740.2195
www.adworldseries.com





Table of Contents

Overview Page 2
 Schedule of Events Page 3
 Selecting a Room and Player FeesPage 4
 Resort Map.....Page 5

About Peppermill Tower Rooms Pages 5-11

Tower Overview Page 6
 One (1) King Bed (\$\$\$).....Page 7 Option “1”
 Two (2) Queen Beds (\$\$\$).....Page 8 Option “2”
 Grand Suite (\$\$\$).....Page 9 Option “3”
 Imperial Suite (\$\$\$\$).....Page 10 Option “4”
 Ember Suite (\$\$\$\$).....Page 11 Option “5”
 Luxury Suite (\$\$\$\$\$).....Page 12 Option “6”

About Tuscany Tower Rooms Pages 12-18

Tower Overview Page 13
 One (1) King Bed (\$\$\$).....Page 14 Option “T1”
 Two (2) King Beds (\$\$\$).....Page 15 Option “T2”
 Pool View 1 King (\$\$\$\$).....Page 16 Option “T3”
 Pool View 2 Kings (\$\$\$\$).....Page 17 Option “T4”
 Florence Suite (\$\$\$\$).....Page 18 Option “T5”
 Villa Suite (\$\$\$\$\$).....Page 19 Option “T6”

About North & West Wing Rooms

One (1) King Bed (\$\$)Page 20 Option “W”

SEPTEMBER 22ND * 26TH

For more information contact Michael Meiches
michael@adworldseries.com 310.740.2195
www.adworldseries.com





Room Reservation Contact:

Michael Meiches
 The Advertising Softball World Series
 michael@adworldseries.com
 (310) 740-2195



All room reservations and all changes must be made by the Ad World Series. No penalty for changing room types based on availability.

Ad Softball World Series “Event Dates”:

Sunday arrival, September 22
 Thursday departure, September 26



NOTE: Players/Guests may extend their stay prior to or post-event dates and qualify for the group discounted room rate.

Room Locations:

1. **Peppermill Tower (\$\$\$, \$\$\$\$, \$\$\$\$\$).** Either 1 KING, 2 QUEENS + various suite options with connecting standard-size rooms
2. **Tuscany Tower (\$\$\$\$).** Either 1 KING, 2 KINGS + Suites with connecting rooms
3. **North & West Wing (\$\$).** KING bed only

Room Selection Considerations:

- Room location, room size and amenities, and proximity to resort amenities (i.e., lobby, pool, restaurants, bars, casino, parking garage and parking lots).
- Two-bedded rooms are priced slightly higher than a single bed rooms.
- Number of roommates (if applicable) also determine pricing.
- NOTE: All rooms include empty refrigerators.

About Player Fees:

Most of the Peppermill room inventory will be priced lower compared to last year.

Conversely, we are living in a rising, inflationary world; however, the ASWS will not de-value event perks that you have come to expect. Therefore, no drop-off of dinner party venues, menus, adult beverages / soft drinks, entertainment, video productions, and staffing.

All player / guest fees (posted under every room type) will include mandatory food & beverage gratuities and taxes. The Peppermill’s mandatory nightly resort fee is normally \$40.00 plus tax per night, but ASWS has reduced that rate to \$20.00 per night plus tax.

SEPTEMBER 22ND * 26TH

For more information contact Michael Meiches
 michael@adworldseries.com 310.740.2195
 www.adworldseries.com





Sunday, September 22

- Noon** Team Captains Meeting
1:30pm New Player Orientation
3 - 5pm Player / Guest Registration (Pick up swag bags and gifts)
3 - 6pm Poolside Beer Garden (Hosted beer and soft drinks)
7 - 10:30pm Opening Dinner Party, One-Pitch Competition Player Draft, and Team Jersey Parade

Monday, September 23

- 8am – 3pm** Competition begins at the Golden Eagle Regional Sports Complex in Sparks. All co-ed teams play 4 games.
Evening Mystery Venue Dinner Party. Fully hosted bar and includes motor coach transportation.

Tuesday, September 24

- 8am – 10:30** One-Pitch Draft Competition (optional)
8am – 5pm All co-ed teams play 4 more games
6pm - ? Player's Free Night. The Peppermill pools open until 10pm. Multiple dining options, bars, the Game Lab arcade, and gaming opportunities.

Wednesday, September 25

- 8am – 4pm** Championship Day. All co-ed teams play 4 more key division and crossover games. Playoff games (if necessary).
4pm – 6:30 Poolside Beer Garden and Jersey Trading
8pm – 11 Awards banquet including video presentations. Fully hosted bar.

Thursday, September 26

Departure or extended Peppermill Resort stays offered at discounted group rates.

KEY REMINDERS:

- Group rates also apply for early arrivals (September 19-21)
- The Ad World Series makes all room reservations and changes can be made without penalty.
- Rooming submissions due by August 23rd

SEPTEMBER 22ND * 26TH

For more information contact Michael Meiches
michael@adworldseries.com 310.740.2195
www.adworldseries.com





Your Room Selection Will Determine Player Fees:

Based on four (4) nights lodging. Arrival September 22, Departure September 26.
Fees are based on room tower selection, number of beds, and number of roommates.

Three (3) Dinner Parties Included:

- **Opening Dinner** at the Peppermill Resort (Sunday, September 22). Buffet with entertainment including the Team Jersey Parade and “hosted” beer and soft drinks.
- **Off-Site “Mystery Venue” Dinner** (Monday, September 23). Includes motor coach transportation, entertainment, “hosted” spirits, beer, wine, soft drinks. Venue rating? A+.
- **Awards banquet** at the Peppermill (Wednesday, September 25). Includes event videos, “hosted” spirits, beer, wine, and soft drinks.
- **NOTE: Player’s Free Night** on Tuesday, September 24. The resort pools (heated at 86 degrees) will remain open until 10pm... as will most of the resort’s 10 restaurants and a dozen plus bars.

Two (2) Afternoon Beer Gardens - Poolside at the Peppermill:

- (September 22, 25). Hosted beer and soft drinks.

Also:

- Swag bags, apparel and gifts for all registered players and guests
- Entry into all off-field competitions including the One-Pitch competition (Day #2 of play)
- Division championship awards (long sleeve sublimated jerseys, medals, team plaque)
- Team MVPs (every team recognizes its top male and female player)
- Fees also include entertainment, staffing, equipment rentals, staging, lighting, bartenders, pre-event newsletters, and mandatory taxes, gratuities and resort fees.

Non-Playing Guests & Children:

Guests enjoy the same off-field benefits as players... at a deeply discounted fee of \$1,400.00. The “player” sharing the bedroom pays the single occupancy rate.

CHILDREN UNDER 16: Nominal fees will apply for meals and soft drinks only provided the children occupy the same room as their parents. If a second inter-connecting or adjoining room is required, then the parents will be responsible for paying the room rate, discounted resort fees, and applicable taxes.

SEPTEMBER 22ND * 26TH

For more information contact Michael Meiches
michael@adworldseries.com 310.740.2195
www.adworldseries.com

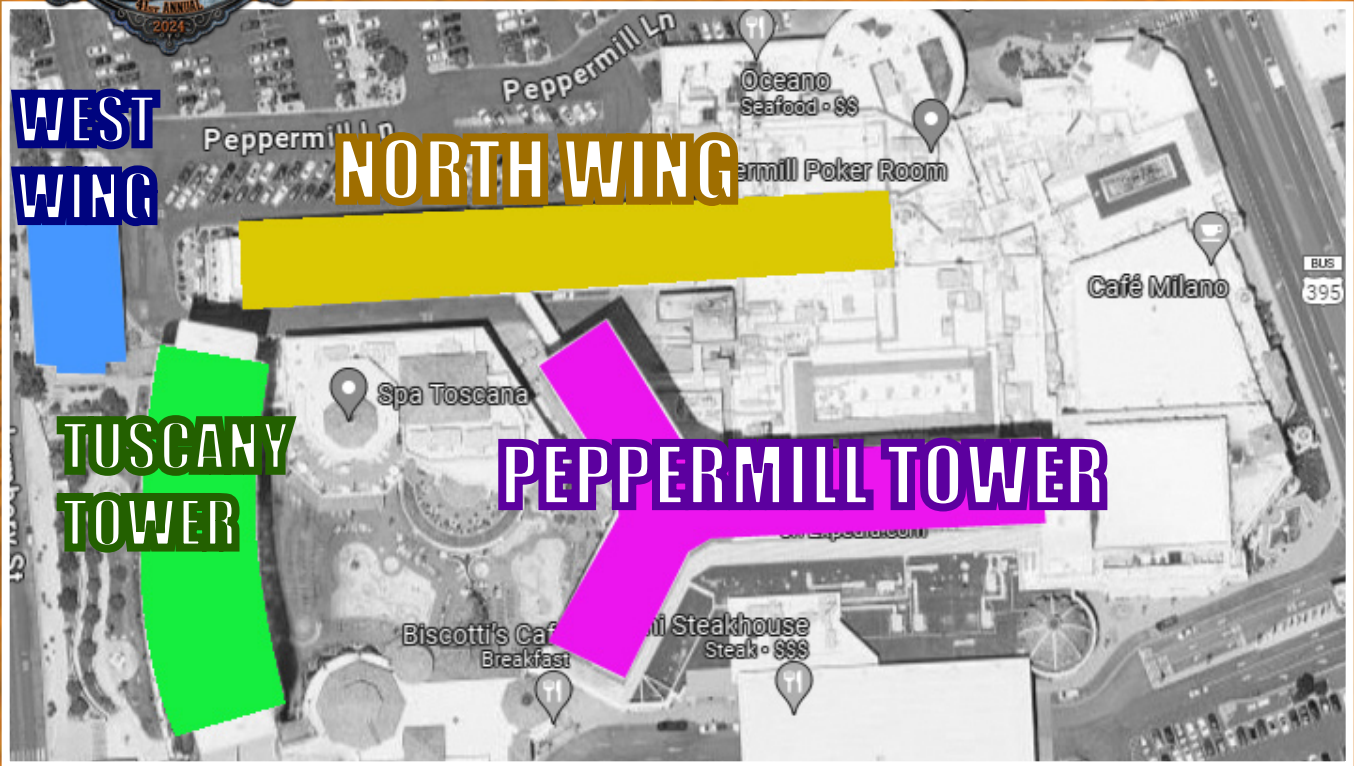


THE 41ST ANNUAL



SELECTING YOUR ROOMS AND PLAYER FEES

5

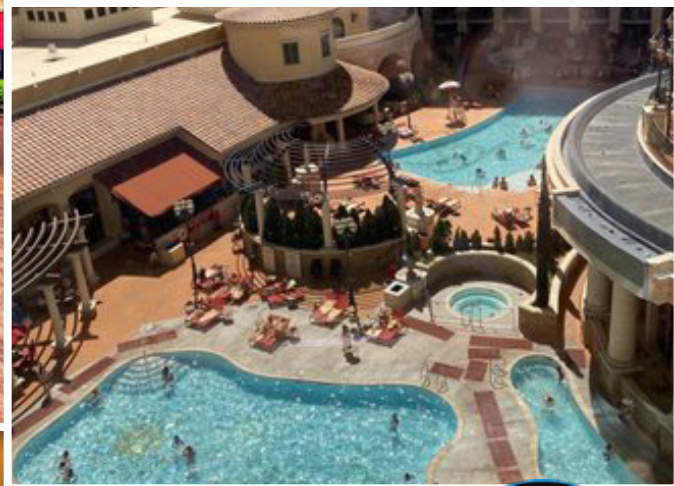
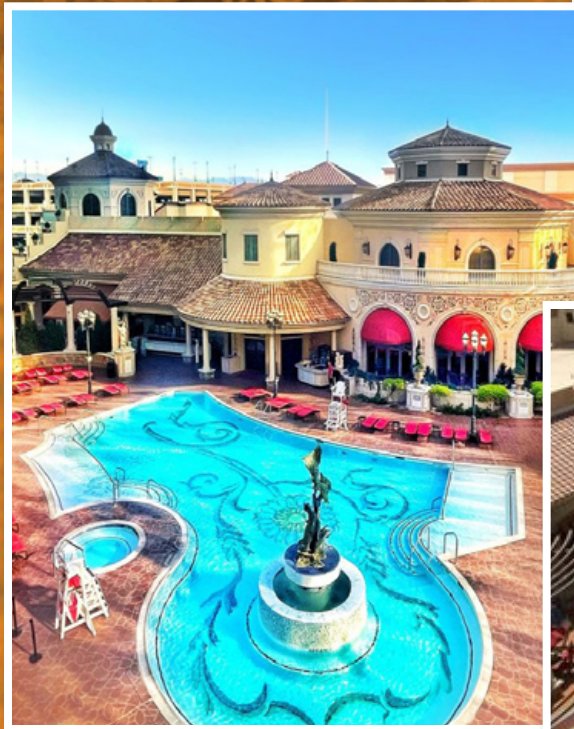
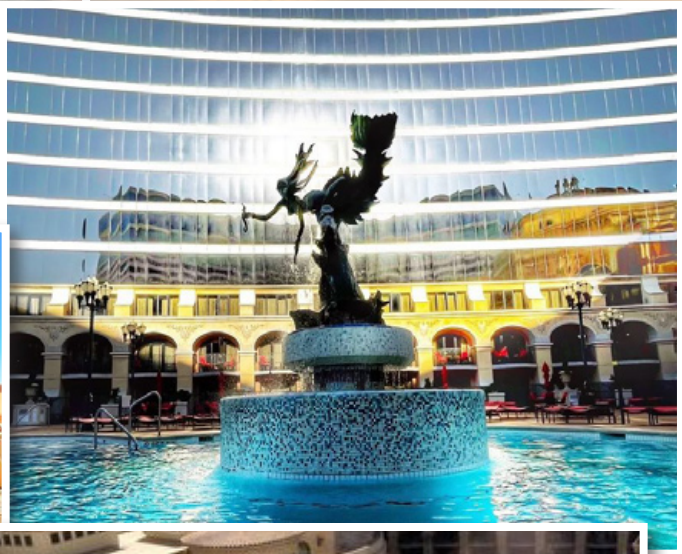


SEPTEMBER 22ND * 26TH

For more information contact Michael Meiches
michael@adworldseries.com 310.740.2195
www.adworldseries.com



THE 41ST ANNUAL



SEPTEMBER 22ND * 26TH

For more information contact Michael Meiches
michael@adworldseries.com 310.740.2195
www.adworldseries.com



THE 41ST ANNUAL



Introducing "PEPPERMILL TOWER" ROOMS \$\$\$, \$\$\$\$\$, \$\$\$\$\$\$

6

Peppermill Tower LOCATION, LOCATION, LOCATION

- Closest to Front Desk / Check-In, Lobby
- Cafe Espresso Grab 'N Go
- Closest to Casino & Sportsbook
- Closest to Restaurants & most Bars
- Closest to Escalator leading to the Parking Garage
- Closest to gift shop, men's and ladies apparel stores
- Closest to Game Lab (3rd Floor)

PROXIMITY TO POOL (Access via Tuscany Tower)

- 3-minute walk from the Peppermill Tower elevator bank
- Walk past lobby, then take the escalator leading to Tuscany Tower

ASWS EVENTS IN THE PEPPERMILL TOWER

- Awards banquet, but that might switch to Tuscany Tower ballroom

PROS vs. CONS ABOUT THE PEPPERMILL TOWER

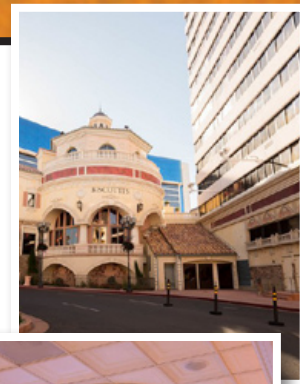
- Reasonably-priced, just not as spacious as Tuscany Tower rooms
- Closest to the main lobby, a grab 'n go, the casino and most restaurants, bars
- Closest to the parking garage

LARGER SUITES

- Whereas the ASWS has contracted some suites for the duration of your anticipated stay (first come, first served), some units might not be available over weekends.

PEPPERMILL TOWER ROOM OPTIONS (\$\$\$ - \$\$\$\$\$, \$\$\$\$\$\$)

Option 1: Peppermill Tower - <i>One (1) KING Bed</i>	Page 7
Option 2: Peppermill Tower - <i>Two (2) QUEEN Beds</i>	Page 8
Option 3: Peppermill Tower - <i>Grand Suite</i>	Page 9
Option 4: Peppermill Tower - <i>Imperial Suite</i>	Page 10
Option 5: Peppermill Tower - <i>Ember Suite (limited quantity)</i>	Page 11
Option 6: Peppermill Tower - <i>Luxury Suite (limited quantity)</i>	Page 12



SEPTEMBER 22ND * 26TH

For more information contact Michael Meiches
michael@adworldseries.com 310.740.2195
www.adworldseries.com



THE 41ST ANNUAL

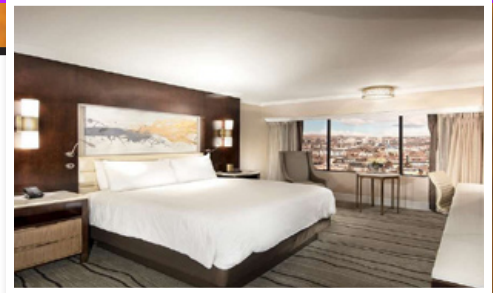


PEPPERMILL TOWER OPTION "1" 1-2 Occupants KING BEDROOM

7

KING ROOM FEATURES:

- Room Size: 350'
- 1 Sink
- Able to connect to another Standard Room (2 Queens)



ROOM AVAILABILITY:

Good for extended stays as well. Don't wait under mid-August to book though.

PLAYER FEES INCLUDE 1 KING BED (4-night stay):

Single Occupancy: **\$2,450.00**

Double Occupancy: **\$1,995.00** per player

BRINGING A NON-PLAYING GUEST?

Player pays single occupancy of **\$3,850.00** which includes the guest participating in all activities including dinner parties.

EXTRA NIGHT STAYS:

(Room rates posted below include resort fee & taxes):

Thursday, September 26... Add \$150.00 (ASWS discounted rate)

Friday, night, September 20... Add \$230.00

Saturday night, September 21... Add \$230.00

Friday night, September 27... Add \$230.00

Saturday night, September 28... Add \$230.00



SEPTEMBER 22ND * 26TH

For more information contact Michael Meiches
michael@adworldseries.com 310.740.2195
www.adworldseries.com



THE 41ST ANNUAL



PEPPERMILL TOWER OPTION "2" 1-4 Occupants TWO QUEEN BEDROOM

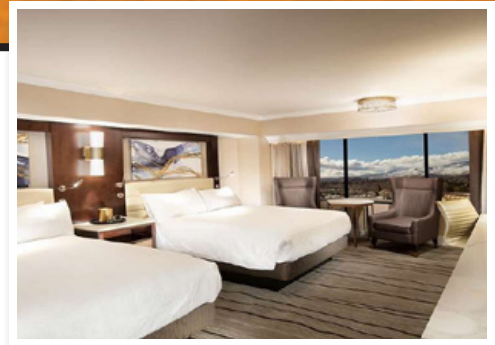
8

QUEEN / QUEEN ROOM FEATURES:

- Room Size: 350'
- 1 Sink
- Able to connect to another Standard Room (King bed)

ROOM AVAILABILITY:

Good for extended stays as well.



PLAYER FEES INCLUDE 2 QUEEN BEDS (1-4 occupants, 4-night stay):

- Single Occupancy: **\$2,510.00** per player
- Double Occupancy: **\$2,060.00** per player
- Triple Occupancy: **\$1,950.00** per player
- Quad Occupancy: **\$1,890.00** per player

BRINGING A NON-PLAYING GUEST?

Player pays single occupancy of **\$3,910.00** that includes the adult guest participating in all event functions.

EXTRA NIGHT STAYS:

(Room rates posted below include resort fee & taxes):

- Thursday, September 26... Add \$175.00
- Friday, night, September 20... Add \$250.00
- Saturday night, September 21... Add \$250.00
- Friday night, September 27... Add \$250.00
- Saturday night, September 28... Add \$250.00



SEPTEMBER 22ND * 26TH

For more information contact Michael Meiches
michael@adworldseries.com 310.740.2195
www.adworldseries.com



THE 41ST ANNUAL

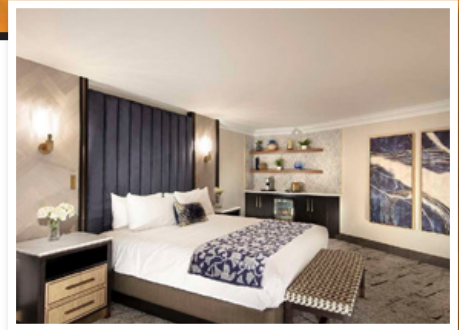


PEPPERMILL TOWER OPTION "3" 1-2 Occupants GRAND SUITE

9

GRAND SUITE FEATURES:

- Room Size: 500'
- Oversize bathroom, walk-in steam shower, dual body jets
- Sitting area, writing desk
- Double-pillow top mattresses; triple sheet linens
- Able to connect to another Standard Room (2 queens)



ROOM AVAILABILITY:

Extremely limited quantity at these discounted room rates. Therefore, first come, first served. Available over weekend nights.

PLAYER FEES INCLUDE 1 KING BED (1 - 2 occupants, 4-night stay):

Single Occupancy: **\$2,475.00**

Double Occupancy: **\$2,025.00** per player

BRINGING A NON-PLAYING GUEST?

Player pays single occupancy of **\$3,875.00** that includes the adult guest participating in all event functions.

CHILDREN:

Lodging: No additional charge if children stay in the same room.
Meals/Beverage Charge: *TBD depending on child's age.*

EXTRA NIGHT STAYS:

(Room rates posted below include resort fee & taxes):

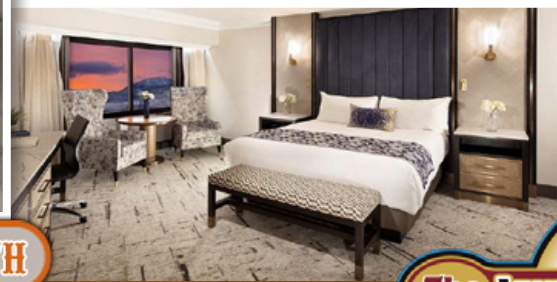
Thursday, September 26... Add \$160.00

Friday night, September 20... Add \$240.00

Saturday night, September 21... Add \$240.00

Friday night, September 27... Add \$240.00

Saturday night, September 28... Add \$240.00



SEPTEMBER 22ND * 26TH

For more information contact Michael Meiches
michael@adworldseries.com 310.740.2195
www.adworldseries.com



THE 41ST ANNUAL



PEPPERMILL TOWER OPTION "4" 1-2 Occupants IMPERIAL SUITE

10

ROOM FEATURES:

- Room Size: 600'
- LED Electric Fireplace
- Jetted Air Tub in living area
- 65" TV
- Porcelain walk-in steam shower with body sprays
- Double-pillow top mattresses; triple sheet linens
- 2 Sinks
- Able to connect to another Standard Room (2 queens)



ROOM AVAILABILITY:

Extremely limited quantity at these discounted room rates. Therefore, first come, first served. Available over weekend nights.

PLAYER FEES INCLUDE 1 KING BED (1 - 2 occupants, 4-night stay):

Single Occupancy: **\$2,725.00**

Double Occupancy: **\$2,140.00** per player

BRINGING A NON-PLAYING "ADULT" GUEST?

Player pays single occupancy of **\$4,125.00** that includes the adult guest participating in all event functions.

EXTRA NIGHT STAYS:

(Room rates posted below include resort fee & taxes):

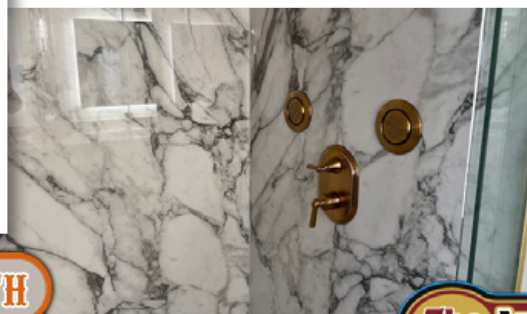
Thursday night, September 26... Add \$230.00

Friday night, September 20... Add \$310.00

Saturday night, September 21... Add \$310.00

Friday night, September 27... Add \$310.00

Saturday night, September 28... Add \$310.00



SEPTEMBER 22ND * 26TH

For more information contact Michael Meiches
michael@adworldseries.com 310.740.2195
www.adworldseries.com



THE 41ST ANNUAL



PEPPERMILL TOWER OPTION "5" 1-2 Occupants EMBER SUITE

11

ROOM FEATURES:

- Room Size: 600'
- LED Electric Fireplace
- 65" TV
- Porcelain walk-in steam shower
- 2 Sinks
- Able to connect to another Standard Room (2 queens)



ROOM AVAILABILITY:

Only 1 left. One perceptive player already selected this room, and hopefully his desired roommate will agree. If not, 2 will be available. So first come, first served. Available over weekend nights.

PLAYER FEES INCLUDE 1 KING BED (1 - 2 occupants, 4-night stay):

Single Occupancy: **\$2,675.00**
Double Occupancy: **\$2,160.00** per player

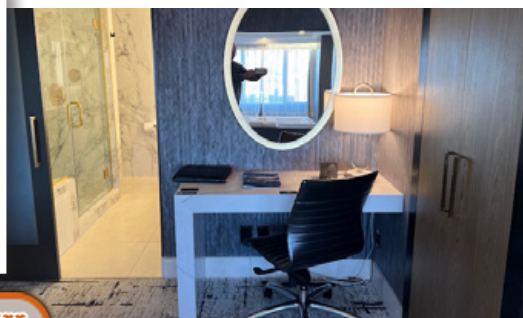
BRINGING A NON-PLAYING "ADULT" GUEST?

Player pays single occupancy of **\$4,075.00** that includes the adult guest participating in all event functions.

EXTRA NIGHT STAYS:

(Room rates posted below include resort fee & taxes):

- Thursday night, September 26... Add \$210.00
- Friday night, September 20... Add \$290.00
- Saturday night, September 21... Add \$290.00
- Friday night, September 27... Add \$290.00
- Saturday night, September 28... Add \$290.00



SEPTEMBER 22ND * 26TH

For more information contact Michael Meiches
michael@adworldseries.com 310.740.2195
www.adworldseries.com



THE 41ST ANNUAL

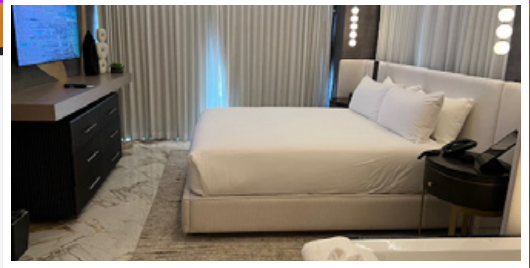


PEPPERMILL TOWER

OPTION "6" 1-2 Occupants

LUXURY SUITE With Living Room

12



ROOM FEATURES:

- Room Size: 780'
- Sitting Area; Bar & dining area (seating for 4)
- Hydro/Aero feel tub, LED Electric Fireplace
- 65" and 50" Hi-Def TV
- Expansive walk-in shower with bench and four body sprays and steam feature; 2 sinks
- Able to connect to another Standard Room (2 queens)

MUST KNOWS:

- Luxury suites have not been contracted. Might be able to secure 2-3 units.
- Weekend availability remains a question, but no issues for Sunday arrival and Friday departure.
- These are also designated smoking rooms.

PLAYER FEES INCLUDE 1 KING BED (1 - 2 occupants, 4-night stay):

Single Occupancy: **\$3,215.00**

Double Occupancy: **\$2,450.00** per player

BRINGING A NON-PLAYING "ADULT" GUEST?

Player pays single occupancy of **\$4,615.00** that includes the adult guest participating in all event functions.

EXTRA NIGHT STAYS:

(Room rates posted below include resort fee & taxes):

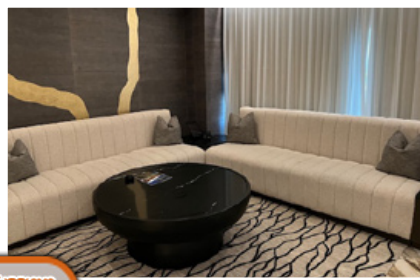
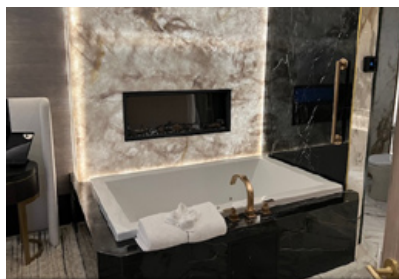
Thursday night, September 26... Add \$340.00

Friday night, September 20... May be able to secure. *Advise ASAP!* \$480 est.

Saturday night, September 21... May be able to secure. *Advise ASAP!* \$480 est.

Friday night, September 27... May be able to secure. *Advise ASAP!* \$480 est.

Saturday night, September 28... May be able to secure. *Advise ASAP!* \$480 est.

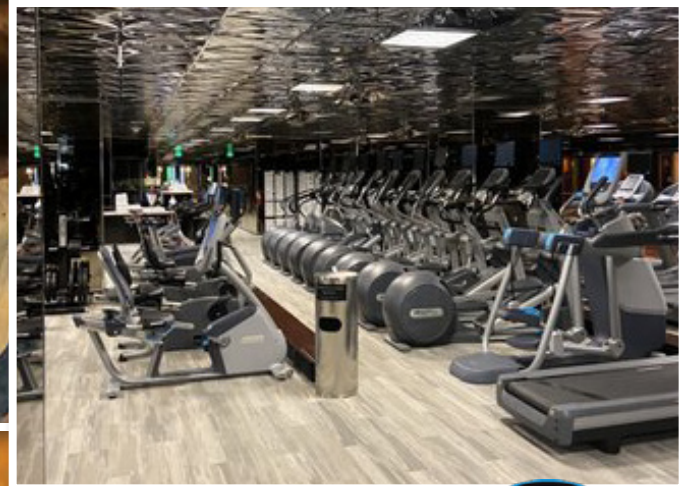
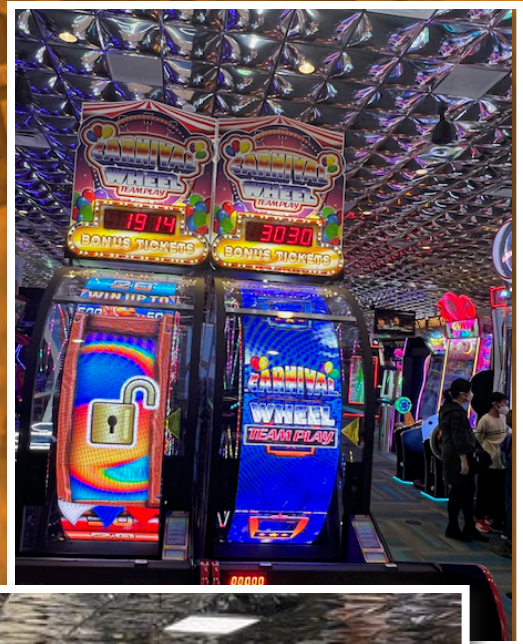
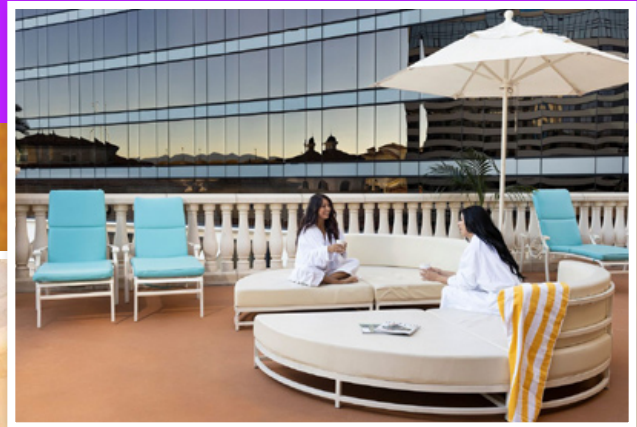


SEPTEMBER 22ND * 26TH

For more information contact Michael Meiches
michael@adworldseries.com 310.740.2195
www.adworldseries.com



THE 41ST ANNUAL



SEPTEMBER 22ND * 26TH

For more information contact Michael Meiches
michael@adworldseries.com 310.740.2195
www.adworldseries.com





Introducing "TUSCANY TOWER" Rooms \$\$\$\$, \$\$\$\$\$

Tuscany Tower LOCATION, LOCATION, LOCATION

- 3-minute walk from the lobby/registration (up the escalator, past the pool, past Biscotti's Café and Grab 'n Go, & Terrace Lounge).
- Terrace Lounge will probably be the post-banquet gathering hangout.
- Fitness Center, Toscana Spa, Business Center
- 3-minute walk to casino, most restaurants, bars, sports book
- 3-minute walk to escalator leading to Parking Garage & Game Lab

PROXIMITY TO POOL

- Pool entrance is via the Tuscany Tower. Includes Upper and Lower pool entry. Pool and hot tubs open until 10pm every night.

ASWS EVENTS IN THE TUSCANY TOWER

- Player Registration, Captain's Meeting, New Player Orientation
- Poolside Beer Gardens (Sept. 22, 25)
- Opening Dinner Party (and potential Awards banquet)

PROS vs. CONS ABOUT THE TUSCANY TOWER

- Spacious, beautifully appointed rooms
- No cons unless Italian design is not to your liking

LARGER SUITES

- Whereas the ASWS has contracted some suites for the duration of your anticipated stay (first come, first served), some units might not be available over weekends.

TUSCANY TOWER ROOM OPTIONS (\$\$\$\$\$, \$\$\$\$\$)

Option 1: Tuscany Tower - <i>One (1) KING Bed (T1)</i>	Page 14
Option 2: Tuscany Tower - <i>One (2) KING Beds (T2)</i>	Page 15
Option 3: Tuscany Tower - <i>Poolside 1 KING Room (T3)</i>	Page 16
Option 4: Tuscany Tower - <i>Poolside 2 KING Room (T4)</i>	Page 17
Option 5: Tuscany Tower - <i>Florence Suite (limited quantity) (T5)</i>	Page 18
Option 6: Tuscany Tower - <i>Villa Suite (limited quantity) (T6)</i>	Page 19

SEPTEMBER 22ND * 26TH

For more information contact Michael Meiches
michael@adworldseries.com 310.740.2195
www.adworldseries.com



THE 41ST ANNUAL



TUSCANY TOWER OPTION "T1" 1-2 Occupants KING Bedroom

14



KING ROOM FEATURES:

- Room Size: 550'
- Writing desk; Hi-Def TV
- Tuscan furnishings; Double pillow-top mattresses, triple sheeting & linens
- Large marble bathroom, bathtub, and enclosed shower with 2 shower heads
- 2 Sinks; Make-up table
- Able to connect to another Standard 2 King Room (side-by-side entry)

ROOM AVAILABILITY:

Don't wait until mid-August to reserve these rooms especially if you plan to stay over a weekend. Some entire Tuscany floors will be out of service due to hallway and room renovations.

PLAYER FEES INCLUDE 1 KING BED (1 - 2 occupants, 4-night stay):

Single Occupancy: **\$2,630.00**

Double Occupancy: **\$2,190.00** per player

BRINGING A NON-PLAYING "ADULT" GUEST?

Player pays single occupancy of **\$4,030.00** that includes the adult guest participating in all event functions.

EXTRA NIGHT STAYS:

(Room rates posted below include resort fee & taxes):

Thursday night, September 26... Add \$205.00

Friday night, September 20... Add \$285.00

Saturday night, September 21... Add \$285.00

Friday night, September 27... Add \$285.00

Saturday night, September 28... Add \$285.00



SEPTEMBER 22ND * 26TH

For more information contact Michael Meiches
michael@adworldseries.com 310.740.2195
www.adworldseries.com



THE 41ST ANNUAL



TUSCANY TOWER OPTION "T2" 1-4 Occupants TWO (2) KING BEDS

15



FEATURES:

- Two (2) KING Beds
- Room Size: 550'
- Writing desk; Hi-Def TV
- Tuscan furnishings; Double pillow-top mattresses, triple sheeting & linens
- Large marble bathroom, bathtub, and enclosed shower
- 2 Sinks; make-up table
- Able to connect to another Standard 1 King Room (side-by-side entrances)

ROOM AVAILABILITY:

Don't wait until mid-August to reserve these rooms especially if you plan to stay over a weekend. Some entire Tuscan floors will be out of service due to hallway and room renovations.

PLAYER FEES INCLUDE 1 KING BED (2 - 4 occupants, 4-night stay):

Single Occupancy: **\$2,750.00**

Double Occupancy: **\$2,280.00** per player

Triple Occupancy: **\$1,985.00** per player

Quad Occupancy: **\$1,910.00** per player

BRINGING A NON-PLAYING "ADULT" GUEST?

Player pays single occupancy rate of **\$4,150** that includes the guest participating in all event functions.

CHILDREN:

Lodging: No additional charge if children are staying in the same room.

Meals/Beverages: TBD... depending on child's age.

EXTRA NIGHT STAYS:

(Room rates posted below include resort fee & taxes):

Thursday night, September 26... Add \$230.00

Friday night, September 20... Add \$310.00

Saturday night, September 21... Add \$310.00

Friday night, September 27... Add \$310.00

Saturday night, September 28... Add \$310.00



SEPTEMBER 22ND * 26TH

For more information contact Michael Meiches
michael@adworldseries.com 310.740.2195
www.adworldseries.com



THE 41ST ANNUAL



TUSCANY TOWER

OPTION "T3" 1-2 Occupants

POOLSIDE KING BEDROOM WITH BALCONY

16



FEATURES:

- One (1) KING Bed
- Room Size: 550'
- Writing desk; Hi-Def TV
- Tuscan furnishings; Double pillow-top mattresses, triple sheeting & linens
- Large marble bathroom, bathtub, and enclosed shower
- 2 Sinks; Make-up mirror / table
- Able to connect to another Standard 2 King room

POOLSIDE LOCATION:

Upper pool views with small balconies. Ground floor and veranda units. Ground floor patio gate does not open.

PLAYER FEES INCLUDE 1 KING BED (1-2 occupants, 4-night stay):

Single Occupancy: \$2,780.00

Double Occupancy: \$2,310.00 per player

BRINGING A NON-PLAYING "ADULT" GUEST?

Player pays single occupancy rate of \$4,180.00 that includes the guest participating in all event functions.

CHILDREN:

Lodging: No additional charge if children are staying in the same room.

Meals/Beverages: TBD... depending on child's age.

EXTRA NIGHT STAYS:

(Room rates posted below include resort fee & taxes):

Thursday night, September 26... Add \$245.00

Friday night, September 20... Add \$325.00

Saturday night, September 21... Add \$325.00

Friday night, September 27... Add \$325.00

Saturday night, September 28... Add \$325.00



SEPTEMBER 22ND * 26TH

For more information contact Michael Meiches
michael@adworldseries.com 310.740.2195
www.adworldseries.com



THE 41ST ANNUAL



TUSCANY TOWER

OPTION "T4" 2-4 Occupants

POOLSIDE TWO (2) KING BEDROOM WITH BALCONY

17



FEATURES:

- One (1) KING Bed
- Room Size: 550'
- Writing desk; Hi-Def TV
- Tuscan furnishings; Double pillow-top mattresses, triple sheeting & linens
- Sizeable marble bathroom, bathtub, and enclosed shower
- 2 Sinks; make-up table
- Able to connect to another Standard King bed room

POOLSIDE LOCATION:

Upper pool views with small balconies. Ground floor and veranda units. Ground floor patio gate does not open.

PLAYER FEES INCLUDE 2 KING BED (2-4 occupants, 4-night stay):

Single Occupancy: **\$2,895.00**

Double Occupancy (2 King beds): **\$2,410.00** per person

Triple Occupancy (2 King beds): **\$2,115.00** per person

Quad Occupancy: (2 King beds): **\$2,040.00** per person

BRINGING A NON-PLAYING "ADULT" GUEST?

Player pays single occupancy rate of **\$4,295.00** that includes the guest participating in all event functions.

CHILDREN:

Lodging: No additional charge if children are staying in the same room.

Meals/Beverages: TBD... depending on child's age.

EXTRA NIGHT STAYS:

(Room rates posted below include resort fee & taxes):

Thursday night, September 26... Add \$270.00

Friday night, September 20... Add \$345.00

Saturday night, September 21... Add \$345.00

Friday night, September 27... Add \$345.00

Saturday night, September 28... Add \$345.00



SEPTEMBER 22ND * 26TH

For more information contact Michael Meiches
michael@adworldseries.com 310.740.2195
www.adworldseries.com



THE 41ST ANNUAL



TUSCANY TOWER OPTION "T5" 1-2 Occupants FLORENCE SUITE

18



FLORENCE SUITE FEATURES:

- Room Size: 650'
- Writing desk; Hi-Def TV
- Mountain or Pool Views
- Bedroom is draped off offering a sitting room with couch, 3 chairs, 2 tables, and a TV.
- Tuscan furnishings; Double pillow-top mattresses, triple sheeting & linens
- Marble bathroom, bathtub, enclosed shower with 2 shower heads; 2 sinks; make-up table; TV
- Able to connect to another Standard 2 King room (side-by-side entry)
- NOTE: Limited quantity, so first come, first served

PLAYER FEES INCLUDE 1 KING BED (1-2 occupants, 4-night stay):

Single Occupancy: **\$2,760.00**

Double Occupancy: **\$2,280.00** per person

BRINGING A NON-PLAYING "ADULT" GUEST?

Player pays single occupancy rate of **\$4,160.00** that includes the guest participating in all event functions.

CHILDREN:

Lodging: No additional charge if children are staying in the same room.

Meals/Beverages: TBD... depending on child's age.

EXTRA NIGHT STAYS:

(Room rates posted below include resort fee & taxes):

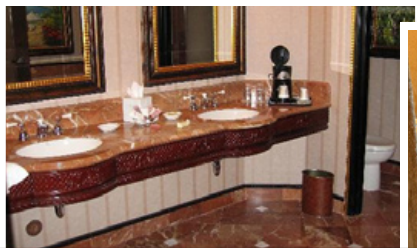
Thursday night, September 26... Add \$230.00

Friday night, September 20... Add \$310.00

Saturday night, September 21... Add \$310.00

Friday night, September 27... Add \$310.00

Saturday night, September 28... Add \$310.00



SEPTEMBER 22ND * 26TH

For more information contact Michael Meiches
michael@adworldseries.com 310.740.2195
www.adworldseries.com



THE 41ST ANNUAL



TUSCANY TOWER

OPTION "T6" 1-2 Occupants

KING VILLA WITH LIVING ROOM

19

KING VILLA FEATURES with an interconnecting door that opens into a sizeable living room with bar

- Bedroom Size: 550' ... Villa size: 550' (with 1/2 bath)
- Tuscan furnishings; Double pillow-top mattresses, triple sheeting & linens
- Mountain or Pool Views
- Writing desk; Hi-Def TV
- Large marble bathroom, bathtub, and enclosed shower with 2 shower heads; TV
- 2 Sinks; Make-up table
- Able to connect to a standard 2 King room making a 2-bedroom suite.

MUST KNOW:

Luxury suites not yet contracted primarily because of questionable weekend availability. Probably no issues for Sunday arrival and Friday departure.

PLAYER FEES INCLUDE 1 KING BED (1-2 occupants, 4-night stay):

Single Occupancy: (1 King bed with living room suite): **\$3,730.00**

Double Occupancy (1 King bed with living room suite): **\$2,685.00** per person

BRINGING A NON-PLAYING "ADULT" GUEST?

Player pays single occupancy rate of **\$5,130.00** that includes the guest participating in all event functions.

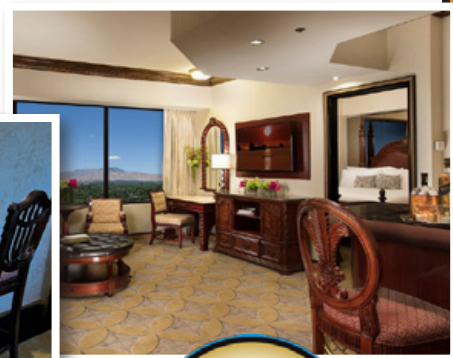
CHILDREN:

Lodging: No additional charge if children are staying in the same room.
Meals/Beverages: TBD... depending on child's age.

EXTRA NIGHT STAYS:

(Room rates posted below include resort fee & taxes):

Thursday night, September 26... Add \$475.00

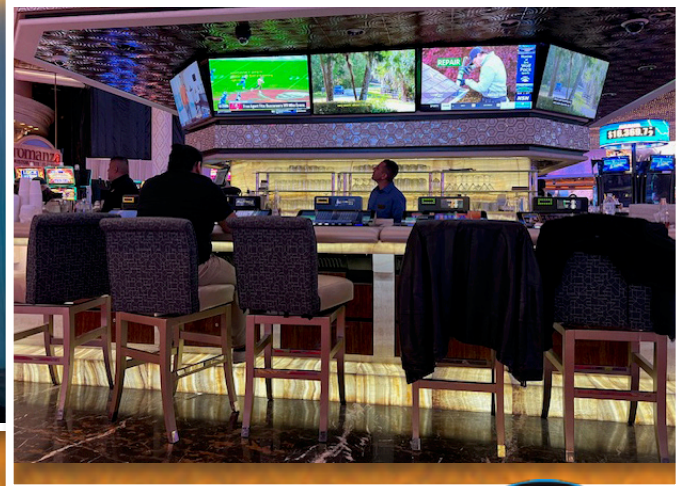
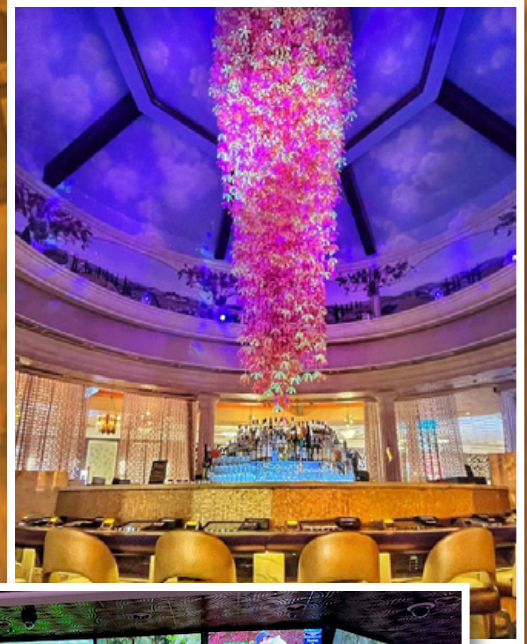
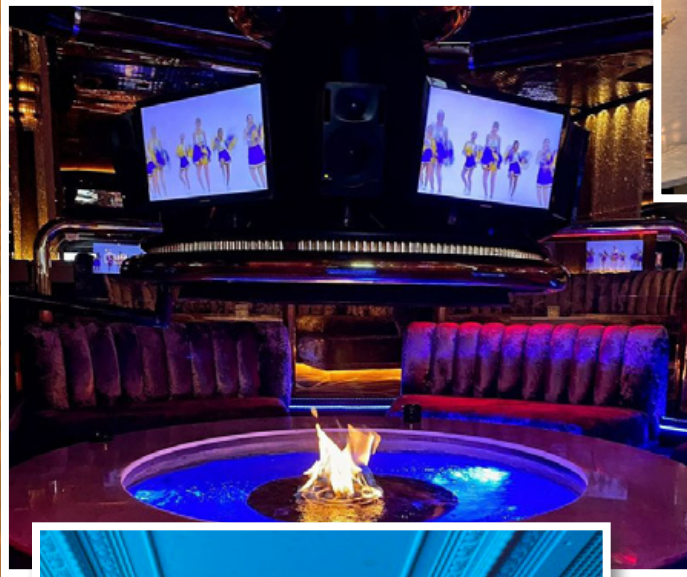


SEPTEMBER 22ND * 26TH

For more information contact Michael Meiches
michael@adworldseries.com 310.740.2195
www.adworldseries.com



THE 41ST ANNUAL



SEPTEMBER 22ND * 26TH

For more information contact Michael Meiches
michael@adworldseries.com 310.740.2195
www.adworldseries.com



THE 41ST ANNUAL



NORTH WING or WEST WING OPTION "W1" 1-2 Occupants KING BEDROOM

20

FEATURES:

- Room Size: 250'
- One (1) KING Bed; Cannot connect to another room

PROS vs. CONS:

- PRO:** Least expensive rooms
- PRO:** Access to the north outdoor parking lot

- CON:** Small rooms and furthest away from all ASWS events and activities
- CON:** Furthest from pool compound
- CON:** Furthest from casino, restaurants and bars

PLAYER FEES INCLUDE 1 KING BED (1-2 occupants, 4-night stay):

Single Occupancy: **\$2,285.00**

Double Occupancy: **\$1,940.00** per person

BRINGING A NON-PLAYING "ADULT" GUEST?

Player pays single occupancy rate of **\$3,685.00** that includes the guest participating in all event functions.

EXTRA NIGHT STAYS:

(Room rates posted below include resort fee & taxes):

Thursday, September 26... Add \$115.00

Friday, night, September 20... Add \$195.00

Saturday night, September 21... Add \$195.00

Friday night, September 27... Add \$195.00

Saturday night, September 28... Add \$195.00



SEPTEMBER 22ND * 26TH

For more information contact Michael Meiches
michael@adworldseries.com 310.740.2195
www.adworldseries.com



THE 41ST ANNUAL



SEPTEMBER 22ND * 26TH

For more information contact Michael Meiches
michael@adworldseries.com 310.740.2195
www.adworldseries.com

